

Analyze. Reset. Revolutionize.

OUR MISSION

Our mission is to revolutionize autoimmune and allergic disease treatment by resetting the immune system for superior long-term disease remission.

LIMITATIONS OF CURRENT AUTOIMMUNE & ALLERGIC DISEASE TREATMENTS

Autoimmune and allergic diseases are characterized by a dysfunctional overactive immune system that triggers an increased number of inflammatory immune cells (T effector cells).

Existing therapies target the inflammatory pathway after the immune system has been overactivated, limiting their efficacy.

Additionally, current therapies fail to provide long-term disease remission, require frequent chronic dosing and suppress the immune system, putting patients at risk of severe life-threatening side effects.

OUR REVOLUTIONARY APPROACH

Our drug candidates, '1805 and '1104, reset the immune system to achieve long-term disease remission without suppressing the immune system and without the need for chronic dosing. Both have demonstrated strong efficacy and safety in preclinical and human studies to date.

'1805 Potential Platform to Treat Multiple Autoimmune Diseases

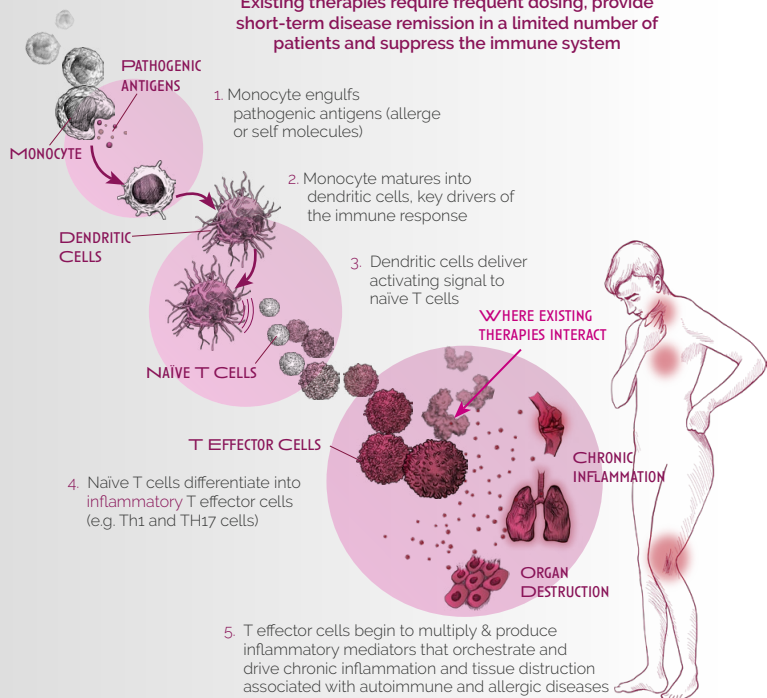
'1805 is a modified analogue of a key regulator of immune function. Its mechanism of action creates vast optionality across multiple indications and routes of administration.

'1104 Potential Platform to Treat Multiple Allergic Diseases

'1104 is a peptide derived from a protein involved in resetting the immune system. The unique mechanism of action of '1104 provides a platform for the development of treatments for allergic disease.

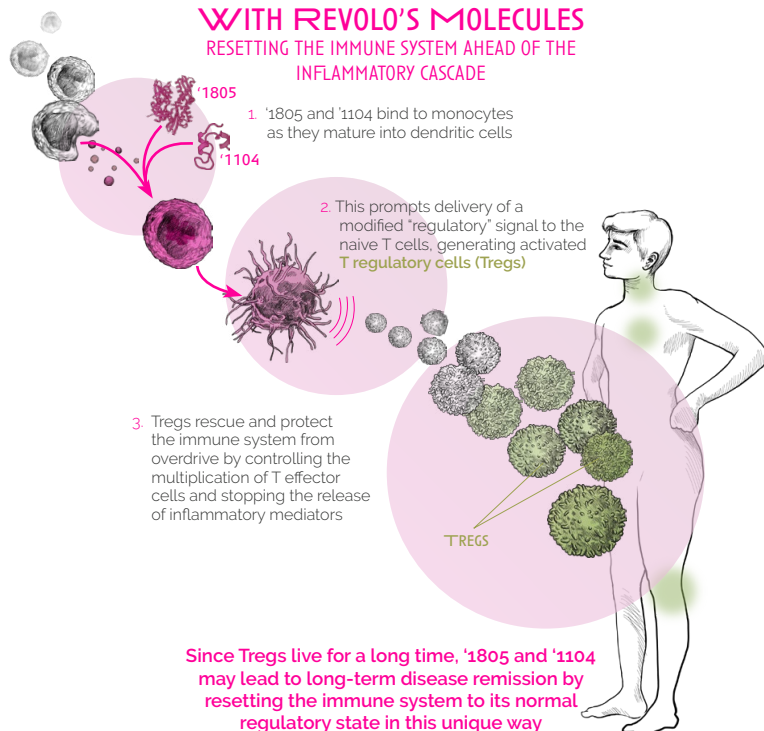
GENERAL IMMUNE RESPONSE

Existing therapies require frequent dosing, provide short-term disease remission in a limited number of patients and suppress the immune system



WITH REVULO'S MOLECULES

RESETTING THE IMMUNE SYSTEM AHEAD OF THE INFLAMMATORY CASCADE



Since Tregs live for a long time, '1805 and '1104 may lead to long-term disease remission by resetting the immune system to its normal regulatory state in this unique way

PRODUCT DEVELOPMENT LANDSCAPE

	PRECLINICAL	PHASE 1	PHASE 2	PLAN
'1104	EOE			Phase 2 study ongoing
	ALLERGIC DISEASE			Allergen sensitivity Phase 2 study ongoing
'1805	RHEUMATOID ARTHRITIS			Second Phase 2 to initiate in H1 2023
	UVEITIS			Phase 2 to initiate in H1 2023

ANTICIPATED MILESTONES

Clinical readouts for two Phase 2 clinical trials in '1104

EXECUTIVE MANAGEMENT CREW

JONATHAN RIGBY, MBA
Group Chief Executive Officer

JONATHAN GOLD
Chief Financial Officer

PERRY CALIAS, PH.D.
Chief Operating Officer

JONES W. BRYAN, PH.D.
Chief Business Officer

ROY F. FOLKES, PH.D.
Chief Scientific Officer

NANCY VINH
Vice President, Clinical Operations

DORA RAU
Senior Vice President, Quality

MARYLYN RIGBY
Vice President, Marketing & Investor Relations

BETH ALLEY
Vice President of Regulatory Affairs

CONTACT

900 Camp Street
New Orleans, LA 70130
United States

Windsor House, Station Court, Station Road,
Great Shelford, Cambridgeshire CB22 5NE,
United Kingdom